

R LAZY B RANCH



34 Years

RAISING CHAROLAIS CATTLE

FOR CALVING EASE, PERFORMANCE & FEED EFFICACY



ANNUAL PRODUCTION SALE

FRIDAY, FEBRUARY 21, 2025

1 PM CT || HUB CITY LIVESTOCK, ABERDEEN, SD

66 YEARLING

CHAROLAIS BULLS SELL

SATISFACTION GUARANTEED

Welcome...

As I sit down to write this letter, I have to pause and reflect on the past year. As always, it has been an interesting year yet again. With the cattle numbers being so low, the markets are high. For those of us still standing, it is a great time to maximize our feeder calves and fat cattle. Let our bull offerings help you to do just that. We have some exciting new bloodlines this year that we are proud to offer. The consistency of quality and performance from Boots and Justified are truly amazing. Take advantage of them to put a very uniform set of feeder calves to auction for maximum profit potential.

We also have to give credit to our maternal lines as we have built a strong foundation in the herd. We give the bulls the same number as their mothers every year – so if you look back at previous years sales, you will see many of the bulls have the same numbers. We are maximizing our herd so you can maximize your profit.

As you look through the bulls offered this year, feel free to call Robert (701) 678-3528 to discuss them, or find out which bulls would best fit in your program. From heifer bulls to performance bulls, we have them all. Stop by anytime you are in the area or call and set a time to look through the pen. We look forward to seeing you on sale day or seeing your bid on DVAuction.

As we look forward to the coming year, we wish you easy calving, plentiful grass, continued strong markets and the best year yet. As always – A bad day at the ranch is better than a good day in an office.

Sincerely,

Robert and Vickie Birkliid

TERMINAL SIRE INDEX (TSI)

The AICA Terminal Sire Index (TSI) is a formal method of combining Expected Progeny Differences (BWT, WWT, YWT, REA, HCW, MARB and FAT) – into one single value on which to base selection decisions. The TSI uses estimates of the genetic relationships between traits with an economic default value based on three year rolling USDA data.

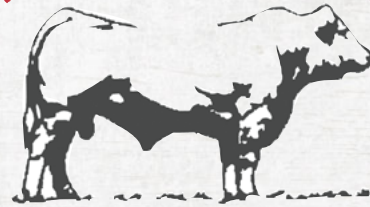
The TSI represents a dollar index per terminal progeny produced for a bull in the AICA database, ranking them for profit potential. This dollar index is to be interpreted much like single trait EPD. For example, if Sire A's index is \$191.66 and Sire B's index is \$200.00, then we would expect Sire B's offspring to average \$8.34 more net return (\$200.00 minus \$191.66) than Sire A's offspring.

2025 CHAROLAIS BREED AVERAGE

CE	BW	WW	YW	M	MCE	TM
11.3	-1.2	62	112	24	9.5	55
SC	CW	REA	FAT	MARB	TSI	
1.0	24	0.70	0.014	0.13	265.32	

Please bring this catalog with you on sale day!

R LAZY B RANCH



Contact Information

R Lazy B Charolais – Robert Birkliid

5851 122nd Ave. SE, Nome, ND 58062
701-924-8876 (H) • 701-678-3528 (C)
Vickie Birkliid | 281-773-7646

Sale Date & Location	Friday, February 21, 2025 • 1:00 PM CT Hub City Livestock Auction, Aberdeen, S.D. Phone 605-225-3279
Auctioneer	Seth Weishaar 605-210-1124
Sale Day Phone	Robert's Cell 701-678-3528 Vickie's Cell 281-773-7646
Livestock Reps	Donnie Leddy; Cattle Business Weekly, 605-695-0113 Hadley Schotte, AICA, 785-562-6632 Kelly Kline, Tri-State Livestock News, 701-320-5817 Steve Hellwig, Hub City Livestock, 605-380-3905 Mark Hove, Hub City Livestock, 605-290-4896
Ration	Bulls were creep fed for 6 weeks before weaning and have been on a TMR bunk ration of corn silage, ground hay, soybean meal and a mineral mix from Purina containing Availa 4 trace mineral supplement that was formulated at 50 mcal of energy and 13.5% protein for optimal growth without compromising foot health and producing a bull that will stay sound for years to come.
Feeding Arrangement	The bulls may be kept, at the ranch, after April 1, 2023, at the buyer's risk for \$3.00/day.
Delivery	Delivery free first 300 miles
Additional Performance Information	Adj. 365, ADG, and scrotal measurements will be provided sale day. Ultrasound information available sale day.
Guarantee	Bulls will be guaranteed to your satisfaction and semen tested before delivery. If there is a problem, we will provide a replacement to use and credit at next year's sale.
Insurance	Insurance will be available at a reasonable rate for both life insurance & loss of use coverage from Martin-Trudeau Insurance on sale day.
Trucking	A \$100 discount per bull will be given if you take your bull home on sale day. Bulls not taken home on sale day will be trucked back to the ranch for later delivery.
Health	The cattle are on a full vaccination program and interstate and Canadian health papers will be provided at no cost.
Sale Terms	Cash or check payable sale day unless credit arrangements are made with Robert Birkliid before the sale.

Additional information, ultrasound & performance data can be found on the website.

www.rlazybranch.com

See page 3 for details on DVAuction.



A LT JUNCTION 1264 PD Polled
Reg#: M959470

BD: 3/11/21	BW: 97	ADJ WW: 911	Ratio: 116	CE	9.2
	YW: 1473	ADG: 3.51		BW	0.3
LT BLUE VALUE 7903 ET LT BLUEGRASS 4017 P LT UNLIMITED MAID 7184 P				VW	59
LT BRENDA 5456 ET PLD LT LONG DISTANCE 9001 PLD LT BRENDA 1014 PLD				YW	108
LT ASSERTION 1277 P LT PEARL'S BREEZE 2236 P LT UNLIMITED DUKE 1172 P LT UNLIMITED LASS21 56P LT SILVER DISTANCE 5342P LT BELLE 7026 P WCR PRIME CUT 764 PLD LT BRENDA'S BREEZE 9207P				MILK	25
				MCE	8.6
				MTL	54
				SC	1.2
				TSI	269.31
				CW	29
				REA	0.50
				FAT	0.034
				MARB	0.25

Junction is producing offspring that are born easy, extra length, sound footed and he passes along great carcass value. He was one of the high selling bulls at the 2022 LT sale and backed by a great mother. A true beef bull.



B TURNBULL'S KNOCKIN BOOTS 604K Polled
Reg#: M982496

BD: 01/16/22	BW: 94	ADJ WW: 824	Ratio: 106	CE	14.7
	YW: 1357	ADG: 3.33		BW	-3.9
PLEASANT DAWN MVP 316Y PLEASANT DAWN MAGNUM 56T PLEASANT DAWN RIO 216P				VW	70
CTP MISS ASHLEY 604C LT LEDGER 0332 P WHITECAP LADY EVE 102A				YW	135
HEJ MAGNUM 26R PLEASANT DAWN REDDY 51E LT RIO BLANCO 1234 P PLEASANT DAWN FAY 15L LT BLUEGRASS 4017 P LT BRENDA 6120 PLD JWX SILVER BUCKLE 524U WHITECAP LADY EVE 164R				MILK	24
				MCE	9.9
				MTL	59
				SC	1.6
				TSI	274.12
				CW	28
				REA	0.95
				FAT	0.033
				MARB	0.11

Boots is a new sire we purchased from Turnbull in Canada. I am totally impressed with the offspring. They are consistent in all aspects of the beef business, in their look, structure, foot quality, feedlot performance, disposition and fertility. He has been a strong breeder in the pasture and holds condition while doing it. He was the sire of 2 of the 3 in the Champion pen of bulls at the recent Canadian Western Agribition for Jon Wright and sons in Canada. You'll be seeing a lot more of this sire group in the future.



C RLB FARGO FLAME 436E Polled
Reg#: M898440

BD: 3/7/17	BW: 80	ADJ WW: 885	Ratio: 103	CE	7.4
	YW: 1464	ADG: 3.62		BW	-0.4
RBM FARGO Y111 SPARROWS FARGO 811U HC RHINESTONE 5100				VW	78
RLB MS MAGGY 436B P KEYS CHARLES BRONSON 189X RLB MISS MAGNUM 216Z				YW	147
WINN MANS LANZA 610S SPARROWS DELIGHT 74L LT EASY PRO 1158 PLD HC JACK 2082 KEYS CHARLES BRONSON 2U CARDINALS LADY D680P KEYS MAGNUM 44U RLB MS UNLIMITED 808U				MILK	26
				MCE	11.6
				MTL	65
				SC	0.9
				TSI	285.15
				CW	41
				REA	1.02
				FAT	0.062
				MARB	0.12

Fargo Flame offspring are as good as ever, but this will be his last calf crop. He still had perfect feet when we sold him and his progeny are the same.



D KEYS BALLYHOO 239J Polled
Reg#: M957492

BD: 04/04/21	BW: 86	ADJ WW: 597	Ratio: 83	CE	9.3
	YW: 1251	ADG: 4.09		BW	0.9
KEYS BALLYHOO 77D KEYS PROGRESSIVE 170Z MISS KEY GORGEOUS 90Z				VW	71
MISS KEY GIRL 160Y KEYS TEN-ACIOUS 166S MISS KEY GIRL 36P				YW	138
KEYS CHARLES BRONSON 2U MISS KEY MEG 2T SCR BRONCO 9026 MISS KEY GORGEOUS 24U KEYS MCTENDER 279P MISS KEY MAYBELL 73N KEYS MARK IT 157M MISS KEY GIRL 82M				MILK	12
				MCE	14.3
				MTL	47
				SC	1.2
				TSI	270.71
				CW	30
				REA	0.88
				FAT	-0.022
				MARB	-0.11

This Ballyhoo bull has impressed me with the look of his calves. Nice patterned and heavy muscled with great performance and excellent feet.



E KEYS MAXIMIZER 37J Polled
Reg#: M957511

BD: 02/15/21	BW: 88	ADJ WW: 802	Ratio: 112
	YW: 1538	ADG: 4.60	
<p>DC-OW MAXIMIZER 385PLD OW MAXIMIZER 3041 PLD OW MISS SANDCREEK Y46</p> <p>CARDINALS LAD 6183P MISS KEY GORGEOUS 2G MISS KEY GORGEOUS 25E</p> <p>FC MAGIC WIND 0105 P DC MISS JOSEY 0215 PLD MC-OW SANDCREEK 375 OW MISS DESIGN W78 PLD CARDINALS HONDO 078 P CARDINALS LADY 3137P KEYS COWBOY 15C MISS KEY GORGEOUS 4B</p> <p>Max is doing a great job on our young cows. They have extra length, spring of rib and muscle shape. Super sound footed.</p>			
CE	16.7	BW	0.0
WW	66	YW	130
MILK	33	MCE	16.6
MTL	66	SC	0.7
TSI	270.77	CW	23
REA	0.83	FAT	0.015
MARB	0.15		



F HTA MISSLE 110H Polled
Reg#: M954353

BD: 02/05/11	BW: 106	ADJ WW: 758	Ratio: 101
	YW: 1495	ADG: 4.61	
<p>WINN MANS LANZA 610S SHSH HIGH CLASS 43D SHSH MADONNA 21U</p> <p>M6 GRID MAKER 104 PET HTA BRIDGET 704T HTA BRIDGET 577R</p> <p>SPARROWS DURANGO 585P WINN MAN MERIT 036K SPARROWS SERENGETI 521N MNE MADONNA 7M</p> <p>WCR SIR TRADITION 066 VCR MISS MAC IV 317 SVS NOBLEMAN 25N HTA BRIDGET 325N</p> <p>The Missle bull continues to do an excellent job. Produces plenty of length and extra muscle in his offspring with no issues at all in the calving ease department. Good cattle!</p>			
CE	1.2	BW	1.8
WW	65	YW	119
MILK	31	MCE	-1.1
MTL	64	SC	1.4
TSI	265.05	CW	27
REA	0.81	FAT	-0.034
MARB	0.03		



G LT JUSTIFIED 1528 PLD Polled
Reg#: M963051

BD: 02/15/21	BW: 83	ADJ WW: 732	Ratio: 100
	YW: 1313	ADG: 3.63	
<p>LT AUTHORITY 7229 PLD LT BADGE 9184 PLD LT MADALYNN 6108 PLD</p> <p>LT LEDGER 0332 P MISS HCR LEANN 5651 PLD MISS HCR SONYA 3034 PLD</p> <p>LHD CHOTEAU B1669 P LT KATY 4273 PLD LT PATRIOT 4004 PLD LT MADALYNN 0154 P</p> <p>LT BLUEGRASS 4017 P LT BRENDA 6120 PLD DCR MR SOLUTION W13 MISS HCR SILVER 9046 PLD</p> <p>Justified sold for a pile of money as a yearling at the 2022 LT sale. We purchased a semen share and have been very pleased. He sires style and muscle shape with excellent feet and carcass traits. You'll see more of these in the future too.</p>			
CE	12.6	BW	-2.3
WW	58	YW	108
MILK	21	MCE	8.1
MTL	50	SC	1.0
TSI	245.61	CW	16
REA	0.44	FAT	-0.030
MARB	0.16		

Deep Roots, Dedication & Drive

Contact Dustin Puhmann for all your feed needs:
 712-229-2258 dpuhmann@coopfe.com

WWW.COOPFE.COM

AGRONOMY ENERGY FEED GRAIN LUMBER



H

H WCR MASTER CHIEF 037 P Polled
Reg#: M939613

BD: 01/31/20	BW: 76	ADJ WW: 714	Ratio: 110	CE	12.2
	YW: 1349	ADG: 3.97		BW	-2.5
				WW	77
				YW	132
				MILK	34
				MCE	9.1
				MTL	72
				SC	1.7
				TSI	307.34
				CW	42
				REA	1.13
				FAT	-0.006
				MARB	0.21

GERRARD PASTOR 35Z
ELDER'S BLACKJACK 788B
SVY STARSTRUCK 8X

GERRARD PREACHER 31U
GERRARD ROXANNE 18P
SVY AD INVINCIBLE P 748T
SVY STARSTRUCK 559R

WCR SIR PRIME CUT 637 ET P
WCR MS PRIME CUT 852 P
WCR MS KINGSBURY 684 P

WCR PRIME CUT 764 PLD
WCR MS DESIGN 201 P
WCR KINGSBURY 116 P
WCR MS FIREWATER 4322 P

MC as I call him continues to sire great performance cattle with impressive carcass data. Check out his TSI 307!



I

I DC/CRJ TANK E108 P Polled
Reg#: M905524

BD: 02/08/17	BW: 80	ADJ WW: 915	Ratio: 115	CE	17.4
	YW: 1606	ADG: 4.32		BW	-3.0
				WW	67
				YW	149
				MILK	42
				MCE	15.7
				MTL	75
				SC	0.6
				TSI	322.25
				CW	51
				REA	0.73
				FAT	-0.026
				MARB	0.17

BHD ZEUS X3041
BHD PERSEUS B65 P
BHD MS ZEN Z27

SM ZYLEN A849 S
CRJ MS ZYLEN C1587
BHD MS TRADEMARK Z38

JDJ TRUE MARK T39 P
MD MS SILVERBOE J576
BHD ZEN X270 P
SM MS BOSQUE X0145 P
CJC PHOENIX SON U3078
SM MISS BAILEY T714
CJC TRADEMARK H45
BHD MS CURLIN X264

We used the Tank bull on some heifers with good results. You will like the growth they exhibit. Great calving ease along with stellar EPDs.

REFERENCE SIRE

DVAuction
Broadcasting Real-Time Auctions

**View the Auction Live! Bid Online...
you're ringside right at your desk!**

Buying online is as easy as 1, 2, 3...

1. Create an account at www.DVAuction.com under the "Register" tab
2. Apply for bidding approval by clicking on the "details" tab at least 24 hours prior to the auction — a DV representative will notify you once you have been approved.
3. Tune in for the sale to make your purchases!



High Speed internet is required for successful bidding-be sure to check the lag-time monitor in the top left corner to ensure real-time broadcasts.
Proxy-bidding — if you can't make time to watch the sale, register a proxy bid and let our system represent your bid while you're away. Look for the "proxy bid" tab on the auction listing, and fill in your maximum bids. We'll handle the rest!

For General Questions Please contact Our Office: 402-316-5460 or support@dvauction.com

R LAZY B RANCH
001M RLB MR JUNCTION 001M Polled
 Reg#: M1002628

BD: 3/31/24	BW: 90	AWW: 683	Ratio: 93	CE 7.6
YW: _____	ADG: _____			BW -0.2
				WW 57
				YW 111
				MILK 27.2
				MCE 6.2
				MTL 56
				SC 1.1
				TSI 259.50
				CW 24
				REA 0.61
				FAT 0.030
				MARB 0.17

LT BLUE VALUE 7903 ET
LT JUNCTION 1264 PD
 LT BRENDA 5456 ET PLD

LT BLUEGRASS 4017 P
 LT UNLIMITED MAID 7184 P
 LT LONG DISTANCE 9001 PLD
 LT BRENDA 1014 PLD

LT TIOGA 4090 PLD
RLB MS ROYALE 001H
 RLB MISS ROYAL 817F

BHC TOP PRO 7025 P
 LT BRENDA 8034 PLD
 LT PATRIOT 4004 PLD
 RLB MISS MARA ROYAL 465B P

Very attractive bull with a small head and length to go with a stellar pedigree

R LAZY B RANCH
012M RLB BLUE NORTHER 012M Polled
 Reg#: M1002654

BD: 3/13/24	BW: 84	AWW: 696	Ratio: 99	CE 13.3
YW: _____	ADG: _____			BW -1.8
				WW 66
				YW 122
				MILK 16.2
				MCE 13.9
				MTL 49
				SC 1.1
				TSI 270.33
				CW 29
				REA 0.80
				FAT 0.006
				MARB -0.04

KEYS BALLYHOO 77D
KEYS BALLYHOO 239J
 MISS KEY GIRL 160Y

KEYS PROGRESSIVE 170Z
 MISS KEY GORGEOUS 90Z
 KEYS TEN-ACIOUS 166S
 MISS KEY GIRL 36P

RBM FARGO Y111
RLB MISS BLUE 012H
 RLB MS BLUE 401B P

SPARROWS FARGO 811U
 HC RHINESTONE 5100
 LT BLUE VALUE 7903 ET
 RLB MISS DISTANCE282Z

He's a moderate framed, nice patterned bull. Pretty head and easy disposition.



R LAZY B RANCH
007M RLB MR TO BOOT 007M Polled
 Reg#: M1002992

BD: 4/11/24	BW: 84	AWW: 735	Ratio: 108	CE 13.2
YW: _____	ADG: _____			BW -3.6
				WW 65
				YW 126
				MILK 31.1
				MCE 6.5
				MTL 63
				SC 1.2
				TSI 259.03
				CW 21
				REA 0.77
				FAT 0.030
				MARB 0.10

PLEASANT DAWN MVP 316Y
TURNBULL'S KNOCKIN BOOTS 604K
 CTP MISS ASHLEY 604C

PLEASANT DAWN MAGNUM 56T
 PLEASANT DAWN RIO 216P
 LT LEDGER 0332 P
 WHITECAP LADY EVE 102A

LT TIOGA 4090 PLD
RLB MS UNLIMITED 007H
 RLB MS UNLIMITED 858F

BHC TOP PRO 7025 P
 LT BRENDA 8034 PLD
 WC DURATION 6245 P
 RLB MS UNLIMITED 635D

Attractive bull, high weaning index, very nice mother, excellent EPDs.



R LAZY B RANCH
013M RLB MR MAX FORCE 013M Polled
 Reg#: M1002652

BD: 3/15/24	BW: 94	AWW: 731	Ratio: 102	CE 13.4
YW: _____	ADG: _____			BW 0.1
				WW 69
				YW 135
				MILK 31.3
				MCE 12.7
				MTL 66
				SC 1.0
				TSI 274.42
				CW 30
				REA 0.87
				FAT 0.030
				MARB 0.09

OW MAXIMIZER 3041 PLD
KEYS MAXIMIZER 37J
 MISS KEY GORGEOUS 26

DC-OW MAXIMIZER 385PLD
 OW MISS SANDCREEK Y46
 CARDINALS LAD 6183P
 MISS KEY GORGEOUS 25E

RBM FARGO Y111
RLB MS CHARLENNE 013H
 RLB MS CHARLENE 730E

SPARROWS FARGO 811U
 HC RHINESTONE 5100
 LT COMMISSIONER 5232 PLD
 RLB MISS CHARLENE 319A

A Maximizer with that extra length and size that will add size and growth to English based cows.



R LAZY B RANCH
036M RLB JUSTICE 036M Polled
 Reg#: M1002657

BD: 3/11/24	BW: 90	AWW: 727	Ratio: 103	CE 10.7
YW: _____	ADG: _____			BW -1.1
				WW 63
				YW 112
				MILK 26.8
				MCE 9.3
				MTL 58
				SC 1.3
				TSI 255.57
				CW 22
				REA 0.53
				FAT 0.023
				MARB 0.15

LT BADGE 9184 PLD
LT JUSTIFIED 1528 PLD
 MISS HCR LEANN 5651 PLD

LT AUTHORITY 7229 PLD
 LT MADALYNN 6108 PLD
 LT LEDGER 0332 P
 MISS HCR SONYA 3034 PLD

HTA UNDEFEATED 8115F
RLB MS GLORY 036H
 RLB MISS GLORY 664D

HTA ASTROID 603D
 HTA SARA 447B
 EC MAJOR IMPACT 107 PLD
 RLB MISS GLORIA 410B P

Extra long, extra thick, small head. You can use this bull on any type cow and be in the driver seat. PA free.



R LAZY B BRANCH
040M RLB RED RIVER 040M Polled
 Reg#: M1002647

BD: 3/17/24 **BW:** 88 **AWW:** 730 **Ratio:** 104
YW: _____ **ADG:** _____

RBM FARGO Y111
RLB FARGO FLAME 436E
 RLB MS MAGGY 436B P

LT RANSOM 8644
RLB MS KUDO 040H
 RLB MISS KUDO 313A

SPARROWS FARGO 811U
 HC RHINESTONE 5100
 KEYS CHARLES BRONSON 189X
 RLB MISS MAGNUM 216Z
 LT JOURNEY 5208 PLD
 LT SHEILA 337 PLD
 LT LEDGER 0332 P
 RLB MISS KUDO 152Y PLD

CE	8.5
BW	-0.8
WW	71
YW	130
MILK	24.7
MCE	9.3
MTL	60
SC	1.1
TSI	276.07
CW	31
REA	0.88
FAT	0.033
MARB	0.20

This bull is very well balanced and comes from a young cow that is proving herself as a solid producer.

R LAZY B BRANCH
044M RLB CROSSROADS 044M Polled
 Reg#: M1002641

BD: 3/19/24 **BW:** 90 **AWW:** 763 **Ratio:** 106
YW: _____ **ADG:** _____

LT BLUE VALUE 7903 ET
LT JUNCTION 1264 PD
 LT BRENDA 5456 ET PLD

LT PATRIOT 4004 PLD
RLB MISS TUKO 044H
 RLB MISS TUKO 419B P

LT BLUEGRASS 4017 P
 LT UNLIMITED MAID 7184 P
 LT LONG DISTANCE 9001 PLD
 LT BRENDA 1014 PLD
 LT LEDGER 0332 P
 LK MISS RIO 2119
 RBM FARGO Y111
 RLB MISS TUKO 716T TW

CE	8.2
BW	0.1
WW	68
YW	119
MILK	21.9
MCE	8.4
MTL	56
SC	1.3
TSI	265.30
CW	31
REA	0.56
FAT	0.045
MARB	0.18

This Junction son is impressive. His pedigree is loaded with proven genetics that have never disappointed us. His depth and length and look should get your attention.



R LAZY B BRANCH
103M RLB TARGET 103M Polled
 Reg#: M1002650

BD: 3/17/24 **BW:** 80 **AWW:** 713 **Ratio:** 102
YW: _____ **ADG:** _____

SHSH HIGH CLASS 43D
HTA MISSLE 110H
 HTA BRIDGET 704T

LT MARICOPA 4194 PLD
RLB MS LADY MARK 103J
 RLB LADY MARK 906G

WINN MANS LANZA 610S
 SHSH MADONNA 21U
 M6 GRID MAKER 104 PET
 HTA BRIDGET 577R
 LT LEDGER 0332 P
 LT MOLLY'S TREND 8320 P ET
 LT LANDMARK 5052 PLD
 RLB LADY BLUE 705E

CE	13.5
BW	-3.0
WW	64
YW	111
MILK	29.6
MCE	6.0
MTL	61
SC	1.2
TSI	260.00
CW	22
REA	0.67
FAT	0.001
MARB	0.03

Target will get you on target for the future.

R LAZY B BRANCH
109M RLB MAXWELL 109M Polled
 Reg#: M1002619

BD: 4/4/24 **BW:** 86 **AWW:** 727 **Ratio:** 107
YW: _____ **ADG:** _____

OW MAXIMIZER 3041 PLD
KEYS MAXIMIZER 37J
 MISS KEY GORGEOUS 2G

LT RANSOM 8644
RLB MS TOASTIE 109J
 RLB MS TOASTIE 811F

DC-OW MAXIMIZER 385PLD
 OW MISS SANDCREEK Y46
 CARDINALS LAD 6183P
 MISS KEY GORGEOUS 25E
 LT JOURNEY 5208 PLD
 LT SHEILA 337 PLD
 RBM FARGO Y111
 RLB MS TOASTIE 509C PLD

CE	15.0
BW	-1.0
WW	68
YW	127
MILK	28.9
MCE	14.9
MTL	63
SC	1.1
TSI	270.13
CW	24
REA	0.81
FAT	0.014
MARB	0.14

He has a wide top and a big butt. Small head and smooth shoulders.



R LAZY B BRANCH
1103M RLB FRONTLINE 1103M Polled
 Reg#: M1002649

BD: 3/16/24 **BW:** 86 **AWW:** 722 **Ratio:** 102
YW: _____ **ADG:** _____

LT BADGE 9184 PLD
LT JUSTIFIED 1528 PLD
 MISS HCR LEANN 5651 PLD

LT RUSHMORE 7529 PLD
RLB MS MARIA 1103J
 RLB MISS MARIA 927G

LT AUTHORITY 7229 PLD
 LT MADALYNN 6108 PLD
 LT LEDGER 0332 P
 MISS HCR SONYA 3034 PLD
 LT RUSHMORE 8060 PLD
 LT PETRA 5565 PLD
 RBM FARGO Y111
 RLB MISS MARIA 620D

CE	13.0
BW	-2.4
WW	63
YW	126
MILK	30.3
MCE	7.6
MTL	62
SC	1.0
TSI	259.81
CW	24
REA	0.57
FAT	0.034
MARB	0.13

He is as deep and soggy as they come. Easy doing look and a feeding machine.

R LAZY B RANCH

113M RLB JUSTIFIED 113M

Polled
Reg#: M1002656

BD: 3/12/24 BW: 84 AWW: 692 Ratio: 102
YW: _____ ADG: _____

LT BADGE 9184 PLD
LT JUSTIFIED 1528 PLD
MISS HCR LEANN 5651 PLD

LT AUTHORITY 7229 PLD
LT MADALYNN 6108 PLD
LT LEDGER 0332 P
MISS HCR SONYA 3034 PLD

RBM FARGO Y111
RLB MS BLUE MARK 113J
RLB MS BLUE MARK 806F

SPARROWS FARGO 811U
HC RHINESTONE 5100
LT LANDMARK 5052 PLD
RLB MISS BLUE WEST 609D

The Justified bloodline was born easy with great vigor at birth. Valuable rancher traits.

CE	13.7
BW	-2.2
VW	64
YW	114
MILK	27.5
MCE	8.4
MTL	60
SC	1.0
TSI	260.63
CW	24
REA	0.69
FAT	0.030
MARB	0.07

R LAZY B RANCH

117M RLB JUSTICE 117M

Polled
Reg#: M1002646

BD: 3/17/24 BW: 86 AWW: 697 Ratio: 102
YW: _____ ADG: _____

LT BADGE 9184 PLD
LT JUSTIFIED 1528 PLD
MISS HCR LEANN 5651 PLD

LT AUTHORITY 7229 PLD
LT MADALYNN 6108 PLD
LT LEDGER 0332 P
MISS HCR SONYA 3034 PLD

LT RANSOM 8644
RLB MISS PATINA 117J
RLB MISS PATINA 830F

LT JOURNEY 5208 PLD
LT SHEILA 337 PLD
LT PATRIOT 4004 PLD
RLB MISS TINA 121Y PLD

This is a very attractive bull and has great balance for length and depth along with a pretty head. His young mother did a great job on last years bull calf and she has a bright future here.

CE	11.0
BW	-1.5
VW	66
YW	116
MILK	23.5
MCE	9.3
MTL	56
SC	1.2
TSI	257.62
CW	20
REA	0.56
FAT	0.015
MARB	0.22

R LAZY B RANCH

121M RLB MR MAX 121M

Polled
Reg#: M1002611

BD: 4/7/24 BW: 98 AWW: 686 Ratio: 101
YW: _____ ADG: _____

OW MAXIMIZER 3041 PLD
KEYS MAXIMIZER 37J
MISS KEY GORGEOUS 2G

DC-OW MAXIMIZER 385PLD
OW MISS SANDCREEK Y46
CARDINALS LAD 6183P
MISS KEY GORGEOUS 25E

RBM FARGO Y111
RLB MS SILKY 121 J
RLB MISS SILKY 863F

SPARROWS FARGO 811U
HC RHINESTONE 5100
LT LEDGER 0332 P
RLB MS SILK 622S

He's a long, stretchy kind of bull. Check his EPDs.

CE	9.7
BW	1.7
VW	70
YW	132
MILK	28.8
MCE	11.5
MTL	64
SC	1.0
TSI	269.60
CW	30
REA	0.78
FAT	0.029
MARB	0.09



R LAZY B RANCH

123M RLB MAXIMUM 123M

Polled
Reg#: M1002627

BD: 3/31/24 BW: 88 AWW: 797 Ratio: 114
YW: _____ ADG: _____

OW MAXIMIZER 3041 PLD
KEYS MAXIMIZER 37J
MISS KEY GORGEOUS 2G

DC-OW MAXIMIZER 385PLD
OW MISS SANDCREEK Y46
CARDINALS LAD 6183P
MISS KEY GORGEOUS 25E

RBM FARGO Y111
RLB MIS DEMARA 123J
RLB MISS DEMARA 829F

SPARROWS FARGO 811U
HC RHINESTONE 5100
WC DURATION 6245 P
RLB MISS DEMARA 634D

Attractive Max son with a lot of size and shows early maturity. Great feet and gentle.

CE	12.5
BW	0.2
VW	78
YW	143
MILK	32.3
MCE	12.0
MTL	71
SC	1.0
TSI	269.34
CW	29
REA	0.83
FAT	0.025
MARB	0.06



R LAZY B RANCH

124M RLB JUDGE 124M

Polled
Reg#: M1002660

BD: 3/3/24 BW: 82 AWW: 761 Ratio: 112
YW: _____ ADG: _____

LT BADGE 9184 PLD
LT JUSTIFIED 1528 PLD
MISS HCR LEANN 5651 PLD

LT AUTHORITY 7229 PLD
LT MADALYNN 6108 PLD
LT LEDGER 0332 P
MISS HCR SONYA 3034 PLD

RBM FARGO Y111
RLB MISS PATRIOT 124J
RLB MS PATRIOT 824F

SPARROWS FARGO 811U
HC RHINESTONE 5100
LT PATRIOT 4004 PLD
RLB MS WRANGLER 513C PLD

You be the Judge, but this is as good as they come and still have a good look. All around performance. Tested PA free.

CE	11.9
BW	-1.9
VW	72
YW	126
MILK	24.5
MCE	9.2
MTL	61
SC	1.1
TSI	258.29
CW	26
REA	0.63
FAT	0.038
MARB	0.07





R LAZY B RANCH
126M RLB EASYMAX 126M Polled
 Reg#: M1002633

BD: 3/28/24	BW: 78	AWW: 679	Ratio: 97	CE	14.4
YW: _____	ADG: _____			BW	-1.8
OW MAXIMIZER 3041 PLD	DC-OW MAXIMIZER 385PLD			VW	67
KEYS MAXIMIZER 37J	OW MISS SANDCREEK Y46			YW	126
MISS KEY GORGEOUS 2G	CARDINALS LAD 6183P			MILK	25.8
	MISS KEY GORGEOUS 25E			MCE	12.7
	RBM FARGO Y111			MTL	59
RLB FARGO FLAME 436E	RLB MS MAGGY 436B P			SC	0.8
RLB MS TASHA 126J	WCR SIR KINGSBURY 345 P			TSI	272.14
RLB MISS TASHA 647D	RLB MS TASHA 214Z			CW	28
				REA	0.84
				FAT	0.032
				MARB	0.11

He's a moderate framed bull that is extra thick yet has a calving ease look to him. Low BW and great performance combination. PA free.

R LAZY B RANCH
128M RLB MISSLE PAD 128M Polled
 Reg#: M1002639

BD: 3/21/24	BW: 84	AWW: 694	Ratio: 99	CE	7.3
YW: _____	ADG: _____			BW	-0.2
SHSH HIGH CLASS 43D	WINN MANS LANZA 610S			VW	66
HTA MISSLE 110H	SHSH MADONNA 21U			YW	126
HTA BRIDGET 704T	M6 GRID MAKER 104 PET			MILK	29.7
	HTA BRIDGET 577R			MCE	4.2
	CCC WC RESOURCE 417 P			MTL	62
WDZ FRONT RANGE 602 P	WDZ SKITTLES 341 P			SC	1.0
RLB MISS MARIA 128J	RBM FARGO Y111			TSI	271.82
RLB MS MARIA 339A	RLB MS MARIA 924			CW	31
				REA	0.88
				FAT	0.005
				MARB	0.02

A stretchy Missile son built to calve easy.

R LAZY B RANCH
140M RLB JUSTIFIED 140M Polled
 Reg#: M1002658

BD: 3/8/24	BW: 86	AWW: 676	Ratio: 99	CE	10.6
YW: _____	ADG: _____			BW	-1.0
LT BADGE 9184 PLD	LT AUTHORITY 7229 PLD			VW	65
LT JUSTIFIED 1528 PLD	LT MADALYNN 6108 PLD			YW	117
MISS HCR LEANN 5651 PLD	LT LEDGER 0332 P			MILK	21.4
	MISS HCR SONYA 3034 PLD			MCE	9.0
	LT JOURNEY 5208 PLD			MTL	54
LT RANSOM 8644	LT SHEILA 337 PLD			SC	1.3
RLB MS RANSOM 140J	RBM FARGO Y111			TSI	257.19
RLB MISS FARGO 823F	RLB MS MASTERS 310A			CW	22
				REA	0.61
				FAT	0.023
				MARB	0.15

He's another attractive Justified son. Made right, look close.

R LAZY B RANCH
184M RLB MR JUDGE 184M Polled
 Reg#: M1002659

BD: 3/8/24	BW: 80	AWW: 726	Ratio: 106	CE	12.2
YW: _____	ADG: _____			BW	-2.3
LT BADGE 9184 PLD	LT AUTHORITY 7229 PLD			VW	72
LT JUSTIFIED 1528 PLD	LT MADALYNN 6108 PLD			YW	135
MISS HCR LEANN 5651 PLD	LT LEDGER 0332 P			MILK	24.1
	MISS HCR SONYA 3034 PLD			MCE	8.9
	RBM FARGO Y111			MTL	60
RLB FARGO FLAME 436E	RLB MS MAGGY 436B P			SC	1.2
RLB MS REWARDED 184J	LT LEDGER 0332 P			TSI	268.44
RLB MS REWARD 521C	RLB REWARDING 320A			CW	30
				REA	0.69
				FAT	0.044
				MARB	0.13

Another Justified with great length and smooth fronted. Built for easy calving.

R LAZY B RANCH
291M RLB MISSLE 291M Polled
 Reg#: M1002651

BD: 3/15/24	BW: 84	AWW: 683	Ratio: 100	CE	8.4
YW: _____	ADG: _____			BW	-0.8
SHSH HIGH CLASS 43D	WINN MANS LANZA 610S			VW	62
HTA MISSLE 110H	SHSH MADONNA 21U			YW	111
HTA BRIDGET 704T	M6 GRID MAKER 104 PET			MILK	27.9
	HTA BRIDGET 577R			MCE	6.1
	LT JOURNEY 5208 PLD			MTL	59
LT RANSOM 8644	LT SHEILA 337 PLD			SC	1.4
RLB JS MISS CHAR 3291J	DCR MR U148 RANCH HAND Z196PLD			TSI	265.38
RLB JS MISS CHAROLETTE 597C	RLB MISS KUDO 152Y PLD			CW	23
				REA	0.74
				FAT	-0.018
				MARB	0.10

A Missile son that's clean fronted and big butted. Bold spring of rib makes him a feeding machine.

R LAZY B RANCH
401M JS BIG CHIEF 401M Polled
 Reg#: M1002525

BD: 4/6/24	BW: 86	AWW: 805	Ratio: 95	CE	12.2
YW: _____	ADG: _____			BW	-2.7
ELDER'S BLACKJACK 788B	GERRARD PASTOR 35Z			VW	63
WCR MASTER CHIEF 037 P	SVY STARSTRUCK 8X			YW	113
WCR MS PRIME CUT 852 P	WCR SIR PRIME CUT 637 ET P			MILK	27
	WCR MS KINGSBURY 684 P			MCE	8.3
	LT LEDGER 0332 P			MTL	58
LT PATRIOT 4004 PLD	LK MISS RIO 2119			SC	1.2
JS PATRIOTS APRIL FOOL 741E	LT LONG DISTANCE 9001 PLD			TSI	280.93
RLB DISTANCE MAKER 108Y PLD	RLB MS MAKER 922			CW	30
				REA	0.87
				FAT	0.018
				MARB	0.20

This Master Chief son has it all going on. Indexed in a small herd and is consigned by the Smith family. The bulls were fed right along with ours and managed the same. They sell with the same guarantee. This bull is real good. Long, thick and raised by a foundation type cow from my neighbor's 4H herd. PA free.



R LAZY B RANCH

402M JS MASTER CRAFT 402M

Polled
Reg#: M1002526

BD: 4/20/24 BW: 92 AWW: 895 Ratio: 105
YW: _____ ADG: _____

ELDER'S BLACKJACK 788B GERRARD PASTOR 35Z
WCR MASTER CHIEF 037 P SVY STARSTRUCK 8X
WCR MS PRIME CUT 852 P WCR SIR PRIME CUT 637 ET P
WCR MS KINGSBURY 684 P
LT RANSOM 8644 LT JOURNEY 5208 PLD
JS RANSOM DISTANCE LT SHEILA 337 PLD
RLB DISTANCE MAKER 108Y PLD LT LONG DISTANCE 9001 PLD
RLB MS MAKER 922

Super thick, wide bodied bull. Big weaning weight. Could be the best Master Chief born to date.

CE	11.0
BW	-1.5
VV	71
YW	121
MILK	26
MCE	9.0
MTL	61
SC	1.3
TSI	277.16
CW	26
REA	0.90
FAT	-0.004
MARB	0.23



R LAZY B RANCH

403M RLB MR BALLY WHO 403M

Polled
Reg#: M1002623

BD: 4/2/24 BW: 86 AWW: 708 Ratio: 98
YW: _____ ADG: _____

KEYS BALLYHOO 77D KEYS PROGRESSIVE 170Z
KEYS BALLYHOO 239J MISS KEY GORGEOUS 90Z
MISS KEY GIRL 160Y KEYS TEN-ACIOUS 166S
MISS KEY GIRL 36P
LT LEDGER 0332 P LT BLUEGRASS 4017 P
RLB MS TIMELESS 403B P LT BRENDA 6120 PLD
RLB TIME PIECE 228Z EC ABOUT TIME 5027 PLD
RLB MS UNLIMITED 819U

This is a real pretty bull. The 403 cow is moderate framed and attractive. So is this guy.

CE	11.3
BW	-0.8
VV	64
YW	119
MILK	12.6
MCE	13.4
MTL	44
SC	1.2
TSI	270.04
CW	30
REA	0.76
FAT	0.017
MARB	0.02



R LAZY B RANCH

404M JS MASTER PLAN 404M

Polled
Reg#: M1002527

BD: 5/15/24 BW: 86 Act WW: 554
YW: _____ ADG: _____

ELDER'S BLACKJACK 788B GERRARD PASTOR 35Z
WCR MASTER CHIEF 037 P SVY STARSTRUCK 8X
WCR MS PRIME CUT 852 P WCR SIR PRIME CUT 637 ET P
WCR MS KINGSBURY 684 P
LT PATRIOT 4004 PLD LT LEDGER 0332 P
JS GO THE DISTANCE 8322 LK MISS RIO 2119
RLB DISTANCE MAKER 108Y PLD LT LONG DISTANCE 9001 PLD
RLB MS MAKER 922

A real young May bull. He fits in with the other bulls a month older. Don't overlook him for his age. If you turn out later or need a super bull for a spare to use later in the season, he will get the job done, Guaranteed.

CE	11.2
BW	-2.2
VV	67
YW	120
MILK	28
MCE	8.3
MTL	62
SC	1.2
TSI	279.06
CW	30
REA	0.87
FAT	0.018
MARB	0.20



R LAZY B RANCH

438M RLB BALLYHOO 438M

Polled
Reg#: M1002631

BD: 3/31/24 BW: 92 AWW: 809 Ratio: 112
YW: _____ ADG: _____

KEYS BALLYHOO 77D KEYS PROGRESSIVE 170Z
KEYS BALLYHOO 239J MISS KEY GORGEOUS 90Z
MISS KEY GIRL 160Y KEYS TEN-ACIOUS 166S
MISS KEY GIRL 36P
DCR MR U148 RANCH HAND Z196PLD JCH MR 402 PRO U148
JCH MS NO BULL W24
RLB MISS SYBIL 438B P SCR SIR GRID MAKER 6032
RLB SYBIL 021 RLB MS SYBIL 651S

This 10 year old cow has just raised the best performance bull calf she ever has. Ballyhoo should have come along sooner in her life.

CE	9.2
BW	0.2
VV	72
YW	127
MILK	23.7
MCE	11.7
MTL	59
SC	1.3
TSI	269.87
CW	30
REA	0.85
FAT	-0.004
MARB	-0.04

MARTIN-TRUDEAU
INSURANCE

1531 W Elm • P.O. Box 487
Mitchell, SD 57301
Ph. 605-996-3106 or 800-450-3106
Fax 605-996-7644
Cell 605-770-9986
www.martin-trudeauinsurance.com

Katie Williams
Agent
kwilliams@juffer.com

R LAZY B BRANCH
462M RLB-JS FULL TANK 462M Dehorned
 Reg#: M1002531

BD: 3/5/24 **BW:** 78 **AWW:** 727 **Ratio:** 100
YW: _____ **ADG:** _____

DC/CRJ TANK E108 P
 BHD PERSEUS B65 P
 CRJ MS ZYLEN C1587

JS MS FOOL 462K
 WCR MASTER CHIEF 037 P
 JS PATRIOTS APRIL FOOL 741E

BHD ZEUS X3041
 BHD MS ZEN Z27
 SM ZYLEN A849 S
 BHD MS TRADEMARK Z38
 ELDER'S BLACKJACK 788B
 WCR MS PRIME CUT 852 P
 LT PATRIOT 4004 PLD
 RLB DISTANCE MAKER 108Y PLD

CE	13.2
BW	-1.4
WW	66
YW	132
MILK	34
MCE	11.8
MTL	67
SC	0.9
TSI	300.00
CW	40
REA	0.80
FAT	-0.004
MARB	0.18

This is the only Tank bull in the sale. His mother is a full sibling to the Lot 401. Performance runs in the family. He is dehorned.



R LAZY B BRANCH
472M RLB MR MISSLE 472M Polled
 Reg#: M1002615

BD: 4/5/24 **BW:** 90 **AWW:** 656 **Ratio:** 100
YW: _____ **ADG:** _____

HTA MISSLE 110H
 SHSH HIGH CLASS 43D
 HTA BRIDGET 704T

RLB MS SHEBA 472B P
 EC ABOUT TIME 5027 PLD
 RLB MS SHEBA 627S

WINN MANS LANZA 610S
 SHSH MADONNA 21U
 M6 GRID MAKER 104 PET
 HTA BRIDGET 577R
 EC NO DOUBT 2022 P
 EC TRENDY LADY 5027 P
 RC LIMITLESS 136 PLD
 RLB MS ANGIE 912J PLD

CE	8.5
BW	-0.7
WW	68
YW	123
MILK	27.9
MCE	4.7
MTL	62
SC	1.2
TSI	270.20
CW	31
REA	0.72
FAT	-0.004
MARB	0.01

A Missle son from a cow with some older genetics in our herd that has proven herself over time. Long and smooth fronted.

R LAZY B BRANCH
477M RLB FARGO FORUM 477M Polled
 Reg#: M1002633

BD: 3/15/24 **BW:** 108 **AWW:** 782 **Ratio:** 107
YW: _____ **ADG:** _____

RLB FARGO FLAME 436E
 RBM FARGO Y111
 RLB MS MAGGY 436B P

RLB MS SYBIL 477B P
 WCR HEAVY DUTY 237 P
 RLB MS SYBIL 118Y PLD

SPARROWS FARGO 811U
 HC RHINESTONE 5100
 KEYS CHARLES BRONSON 189X
 RLB MISS MAGNUM 216Z
 EATONS VISIONARY 2044 P
 WCR MS PRINCE 071 P
 SCR SIR GRID MAKER 603Z
 RLB MS SYBIL 651S

CE	3.0
BW	2.1
WW	76
YW	137
MILK	32.4
MCE	6.8
MTL	70
SC	1.1
TSI	275.89
CW	37
REA	0.92
FAT	0.034
MARB	0.09

This Flame son is real smooth fronted and clean jointed. Great performance from an older proven cow.



R LAZY B BRANCH
509M RLB GRILLMASTER 509M Polled
 Reg#: M1002638

BD: 3/22/24 **BW:** 84 **AWW:** 750 **Ratio:** 106
YW: _____ **ADG:** _____

RLB FARGO FLAME 436E
 RBM FARGO Y111
 RLB MS MAGGY 436B P

RLB MS TOASTIE 509C PLD
 LT LEDGER 0332 P
 RLB MS TOASTIE 335A

SPARROWS FARGO 811U
 HC RHINESTONE 5100
 KEYS CHARLES BRONSON 189X
 RLB MISS MAGNUM 216Z
 LT BLUEGRASS 4017 P
 LT BRENDA 6120 PLD
 KEYS CHARLES BRONSON 189X
 RLB MISS TOASTIE O 106 PLD

CE	12.0
BW	-2.0
WW	69
YW	125
MILK	26.5
MCE	12.0
MTL	61
SC	1.0
TSI	272.76
CW	32
REA	0.93
FAT	0.055
MARB	0.08

Big bodied bull with a small head and the Ledger look from his mother.



R LAZY B BRANCH
511M RLB FEEDRITE 511M Polled
 Reg#: M1002995

BD: 4/4/24 **BW:** 86 **AWW:** 773 **Ratio:** 110
YW: _____ **ADG:** _____

TURNBULL'S KNOCKIN BOOTS 604K
 PLEASANT DAWN MVP 316Y
 CTP MISS ASHLEY 604C

RLB MS BLUE BELL 511C PLD
 LT BLUE RAY 3316 TW PLD
 RLB MS MASTERS 310A

PLEASANT DAWN MAGNUM 56T
 PLEASANT DAWN RIO 216P
 LT LEDGER 0332 P
 WHITECAP LADY EVE 102A
 LT BLUE VALUE 7903 ET
 LT BELLE 7026 P
 LT LEDGER 0332 P
 RLB MS MASTER 132Y TW

CE	13.3
BW	-2.1
WW	75
YW	134
MILK	25.1
MCE	11.3
MTL	63
SC	1.7
TSI	269.93
CW	27
REA	0.89
FAT	0.034
MARB	0.15

This Boots sired bull is from a steady producing cow with great feet and perfect udder. He's a big volumed bull with lots of capacity and early maturity like his dad. PA pending.

R LAZY B RANCH

519M RLB BOOT JACK 519K

Polled
Reg#: M1003000

BD: 3/13/24 BW: 80 AWW: 658 Ratio: 90
YW: _____ ADG: _____

PLEASANT DAWN MVP 316Y
TURNBULL'S KNOCKIN BOOTS 604K
CTP MISS ASHLEY 604C

PLEASANT DAWN MAGNUM 56T
PLEASANT DAWN RIO 216P
LT LEDGER 0332 P
WHITECAP LADY EYE 102A

EC MAJOR IMPACT 107 PLD
RLB MISS CHARLIE 519C
RLB MISS CHARLIE 261Z

EC SILVER DISTANCE 740 PLD
EC DYNASTY 107 PLD
KEYS CHARLES BRONSON 189X
RLB MS LIMITLESS 338NPLD

Boot Jack has a lot of length and the build to travel country covering cows. Nice headed.

CE	14.9
BW	-3.9
WW	54
YW	112
MILK	25.3
MCE	12.8
MTL	52
SC	1.2
TSI	264.46
CW	23
REA	0.73
FAT	0.027
MARB	0.05



R LAZY B RANCH

527M RLB MR BALLYHOO 527M

Polled
Reg#: M1002640

BD: 3/21/24 BW: 90 AWW: 675 Ratio: 94
YW: _____ ADG: _____

KEYS BALLYHOO 77D
KEYS BALLYHOO 239J
MISS KEY GIRL 160Y

KEYS PROGRESSIVE 170Z
MISS KEY GORGEOUS 90Z
KEYS TEN-ACIOUS 166S
MISS KEY GIRL 36P

RBM FARGO Y111
RLB MISS WINDY 527C PLD
RLB MISS WIND 926

SPARROWS FARGO 811U
HC RHINESTONE 5100
THREE TREES WIND 0383 ET
RLB MISS TRISTA 732T

Another Ballyhoo that grew well and his mother has raised this kind before.

CE	12.3
BW	-1.1
WW	63
YW	125
MILK	22
MCE	11.5
MTL	54
SC	1.1
TSI	281.13
CW	35
REA	0.89
FAT	0.006
MARB	-0.06

R LAZY B RANCH

546M RLB MR FARGO 546M

Polled
Reg#: M1002635

BD: 3/27/24 BW: 90 AWW: 723 Ratio: 103
YW: _____ ADG: _____

RBM FARGO Y111
RLB FARGO FLAME 436E
RLB MS MAGGY 436B P

SPARROWS FARGO 811U
HC RHINESTONE 5100
KEYS CHARLES BRONSON 189X
RLB MISS MAGNUM 216Z

EC MAJOR IMPACT 107 PLD
RLB MISS CHUCKLES 546C PLD
RLB MS CHUCKLES 237Z

EC SILVER DISTANCE 740 PLD
EC DYNASTY 107 PLD
KEYS CHARLES BRONSON 189X
RLB MS PRETTYGOOD 913

This bull would be a solid choice for anyone. Thickness, performance, good numbers all around.

CE	10.3
BW	-1.6
WW	65
YW	120
MILK	27.4
MCE	12.3
MTL	60
SC	0.8
TSI	267.55
CW	27
REA	0.86
FAT	0.037
MARB	0.11

R LAZY B RANCH

550M RLB ROCKET MAN 550M

Polled
Reg#: M1002604

BD: 4/14/24 BW: 110 AWW: 804 Ratio: 110
YW: _____ ADG: _____

SHSH HIGH CLASS 43D
HTA MISSLE 110H
HTA BRIDGET 704T

WINN MANS LANZA 610S
SHSH MADONNA 21U
M6 GRID MAKER 104 PET
HTA BRIDGET 577R

RBM FARGO Y111
RLB MS CONNIE 550C PLD
RLB MS CONNIE 245Z

SPARROWS FARGO 811U
HC RHINESTONE 5100
KEYS MAGNUM 44U
RLB MS CONVERSE 514

Good, big bull. Born unassisted from a big Fargo daughter who is a Dam of Distinction. Will calve fine on mature cows.

CE	-2.4
BW	4.2
WW	78
YW	140
MILK	30.2
MCE	-0.1
MTL	69
SC	1.4
TSI	272.49
CW	37
REA	0.98
FAT	-0.011
MARB	-0.04



R LAZY B RANCH

582M RLB MAX PRO 582M

Polled
Reg#: M1002655

BD: 3/13/24 BW: 104 AWW: 754 Ratio: 103
YW: _____ ADG: _____

OW MAXIMIZER 3041 PLD
KEYS MAXIMIZER 37J
MISS KEY GORGEOUS 26

DC-OW MAXIMIZER 385PLD
OW MISS SANDCREEK Y46
CARDINALS LAD 6183P
MISS KEY GORGEOUS 25E

WCR SIR KINGSBURY 345 P
RLB MS MYSTIC 582C PLD
RLB MS MYSTIC 160Y PLD

WCR KINGSBURY 116 P
WCR MS PAUL 1171 P
RAILE 2250 U054
RLB MS MAKER 973

A bigger framed, stretchy bull make for cross breeding. Gentle disposition to boot. Plenty of muscle to go with his size.

CE	9.5
BW	1.2
WW	69
YW	127
MILK	30.4
MCE	8.4
MTL	65
SC	0.7
TSI	260.25
CW	23
REA	0.75
FAT	0.018
MARB	0.12



R LAZY B RANCH
609M RLB BOOTS WEST 609M Polled
 Reg#: M1002989

BD: 4/18/24	BW: 90	AWW: 785	Ratio: 112	CE	12.1
	YW: _____	ADG: _____		BW	-1.4
				WW	75
				YW	123
				MILK	23.7
				MCE	10.7
				MTL	61
				SC	1.4
				TSI	265.71
				CW	25
				REA	0.88
				FAT	0.027
				MARB	0.13

A super nice high indexing Boots. Born with lots of vigor. Vickie watched him being born on the camera and said he was on his feet in 15 minutes. When I woke up in the middle of the night and checked the cameras in the barn, he was doing laps around his mother in the pen. Every cattleman can appreciate that kind of vigor.



R LAZY B RANCH
611M RLB FIREHOSE 611M Polled
 Reg#: M1002620

BD: 4/3/24	BW: 96	AWW: 680	Ratio: 97	CE	6.0
	YW: _____	ADG: _____		BW	0.4
				WW	68
				YW	127
				MILK	21.9
				MCE	10.2
				MTL	56
				SC	0.9
				TSI	267.62
				CW	32
				REA	0.79
				FAT	0.051
				MARB	0.11

Fargo x Patriot breeding getting the job done here. It's always worked for us.



R LAZY B RANCH
630M RLB ROAD RANGER 630M Polled
 Reg#: M1002636

BD: 3/25/24	BW: 88	AWW: 742	Ratio: 101	CE	9.1
	YW: _____	ADG: _____		BW	0.4
				WW	68
				YW	128
				MILK	30.4
				MCE	8.6
				MTL	64
				SC	1.2
				TSI	281.18
				CW	37
				REA	0.78
				FAT	0.027
				MARB	0.11

Every angle you look at this bull gives you a good impression. His mother is a big, full bodied cow from a long line of maternal strength.

R LAZY B RANCH
647M RLB ROCKET MAN 647M Polled
 Reg#: M1002630

BD: 3/31/24	BW: 98	AWW: 790	Ratio: 108	CE	0.6
	YW: _____	ADG: _____		BW	1.6
				WW	76
				YW	132
				MILK	23
				MCE	-3.1
				MTL	61
				SC	1.2
				TSI	252.32
				CW	25
				REA	0.75
				FAT	0.000
				MARB	0.03

Probably my favorite Missile son. His mother is long and clean looking and easy to have around. I like him.



R LAZY B RANCH

673M RLB FLAME THROWER 673M

Polled
Reg#: M1002629

BD: 3/31/24 BW: 92 AWW: 782 Ratio: 107
YW: _____ ADG: _____

RBM FARGO Y111 SPARROWS FARGO 811U
RLB FARGO FLAME 436E HC RHINESTONE 5100
 RLB MS MAGGY 436B P KEYS CHARLES BRONSON 189X
 RLB MISS MAGNUM 216Z
 EC ABOUT TIME 5027 PLD EC NO DOUBT 2022 P
RLB HAYMAKER 673D EC TRENDY LADY 5027 P
 RLB MS MILLION MAKER 920 SCR SIR GRID MAKER 6032
 RLB MS MILLON 333N PLD

Real nice Flame son. Thick, wide based, easy fleshing. These older genetic cows have been around this long for a reason. They keep producing.

CE	9.1
BW	-0.4
VV	77
YW	135
MILK	23.1
MCE	10.7
MTL	62
SC	0.9
TSI	267.81
CW	31
REA	0.91
FAT	0.039
MARB	0.03



R LAZY B RANCH

675M RLB MR BALLYHOO 675M

Polled
Reg#: M1002600

BD: 4/23/24 BW: 94 AWW: 718 Ratio: 102
YW: _____ ADG: _____

KEYS BALLYHOO 77D KEYS PROGRESSIVE 170Z
KEYS BALLYHOO 239J MISS KEY GORGEOUS 90Z
 MISS KEY GIRL 160Y KEYS TEN-ACIOUS 166S
 MISS KEY GIRL 36P
 WCR SIR KINGSBURY 345 P WCR KINGSBURY 116 P
RLB MISS TUKO 675D WCR MS PAUL 1171 P
 RLB MISS TUKO 061 TW KEYS MAGNUM 44U
 RLB MISS TUKO 715T TW

A Ballyhoo doing well in the feedlot. Again this older cow has paid her way.

CE	6.2
BW	0.5
VV	75
YW	133
MILK	15.5
MCE	6.4
MTL	53
SC	1.3
TSI	263.90
CW	31
REA	0.80
FAT	0.011
MARB	-0.03

R LAZY B RANCH

711M RLB MR BALLYHOO 711M

Polled
Reg#: M1002642

BD: 3/19/24 BW: 86 AWW: 654 Ratio: 93
YW: _____ ADG: _____

KEYS BALLYHOO 77D KEYS PROGRESSIVE 170Z
KEYS BALLYHOO 239J MISS KEY GORGEOUS 90Z
 MISS KEY GIRL 160Y KEYS TEN-ACIOUS 166S
 MISS KEY GIRL 36P
 RBM FARGO Y111 SPARROWS FARGO 811U
RLB MISS FARGO 711E HC RHINESTONE 5100
 RLB MS MCCOY 470B P RBM NO DOUBT Z34
 RLB MISS MCCOY 959

A good, thick Ballyhoo from a moderate size cow.

CE	10.6
BW	-0.6
VV	63
YW	124
MILK	18.6
MCE	10.2
MTL	50
SC	1.1
TSI	274.51
CW	33
REA	0.84
FAT	0.003
MARB	-0.06

R LAZY B RANCH

715M RLB HIGH LONESOME 715M

Polled
Reg#: M1002998

BD: 3/21/24 BW: 90 AWW: 627 Ratio: 100
YW: _____ ADG: _____

PLEASANT DAWN MVP 316Y PLEASANT DAWN MAGNUM 56T
TURNBULL'S KNOCKIN BOOTS 604K PLEASANT DAWN RIO 216P
 CTP MISS ASHLEY 604C LT LEDGER 0332 P
 WHITECAP LADY EVE 102A
 RBM FARGO Y111 SPARROWS FARGO 811U
RLB MISS LASS 715E TW HC RHINESTONE 5100
 RLB MS LEDGERS LASS 405B P LT LEDGER 0332 P
 RLB MISS KANSAS 242Z

He had the misfortune of losing his mother sometime mid summer, so the lower weaning weight is understandable. All the genetics are there for success as his mother produced other high selling bulls in the past.

CE	10.7
BW	-1.0
VV	70
YW	133
MILK	25.15
MCE	9.2
MTL	60
SC	1.4
TSI	275.04
CW	32
REA	0.92
FAT	0.036
MARB	0.08

R LAZY B RANCH

731M RLB ROUNDER 731M

Polled
Reg#: M1002643

BD: 3/19/24 BW: 88 AWW: 664 Ratio: 95
YW: _____ ADG: _____

LT BLUE VALUE 7903 ET LT BLUEGRASS 4017 P
LT JUNCTION 1264 PD LT UNLIMITED MAID 7184 P
 LT BRENDA 5456 ET PLD LT LONG DISTANCE 9001 PLD
 LT BRENDA 1014 PLD
 LT PATRIOT 4004 PLD LT LEDGER 0332 P
RLB MISS PATTY 731E LK MISS RIO 2119
 RLB MS FARMER 330A RBM FARGO Y111
 RLB MS MAKER 922

A moderate frame, meaty Junction.

CE	10.2
BW	-1.0
VV	56
YW	104
MILK	22.6
MCE	9.6
MTL	50
SC	1.1
TSI	264.49
CW	27
REA	0.59
FAT	0.044
MARB	0.17

R LAZY B RANCH

732M RLB WESTERN BOOTS 732M

Polled
Reg#: M1002993

BD: 4/7/24 BW: 100 AWW: 814 Ratio: 111
YW: _____ ADG: _____

PLEASANT DAWN MVP 316Y PLEASANT DAWN MAGNUM 56T
TURNBULL'S KNOCKIN BOOTS 604K PLEASANT DAWN RIO 216P
 CTP MISS ASHLEY 604C LT LEDGER 0332 P
 WHITECAP LADY EVE 102A
 LT PATRIOT 4004 PLD LT LEDGER 0332 P
RLB MS WESTERN 732E LK MISS RIO 2119
 RLB MS WEST WIND 422B P RBM FARGO Y111
 RLB MISS KEY WIND 906

All the makings here for a bigtime herd bull. One of the very best Boots sons.

CE	7.4
BW	-0.2
VV	79
YW	139
MILK	27.4
MCE	6.4
MTL	67
SC	1.5
TSI	269.87
CW	34
REA	0.82
FAT	0.041
MARB	0.08





R LAZY B RANCH **738M RLB HIGHWAY 738M** Polled
Reg#: M1002626

BD: 3/31/24	BW: 92	AWW: 798	Ratio: 109	CE	9.0
YW: _____	ADG: _____			BW	0.1
LT BLUE VALUE 7903 ET	LT BLUEGRASS 4017 P			WW	71
LT JUNCTION 1264 PD	LT UNLIMITED MAID 7184 P			YW	132
LT BRENDA 5456 ET PLD	LT LONG DISTANCE 9001 PLD			MILK	26.8
	LT BRENDA 1014 PLD			MCE	8.0
RBM FARGO Y111	SPARROWS FARGO 811U			MTL	63
RLB MISS FARGO 738E	HC RHINESTONE 5100			SC	1.2
RLB MS MAC BLEND 146Y P	JLS PERFORMER 766W PLD			TSI	272.76
	RLB MS 869U			CW	35
My pick of the Junctions. Thick and long and free moving on great feet.				REA	0.58
				FAT	0.028
				MARB	0.11

R LAZY B RANCH **742M RLB FARGO FORCE 742M** Polled
Reg#: M1002609

BD: 4/8/24	BW: 86	AWW: 786	Ratio: 112	CE	10.1
YW: _____	ADG: _____			BW	-1.2
RBM FARGO Y111	SPARROWS FARGO 811U			WW	78
RLB FARGO FLAME 436E	HC RHINESTONE 5100			YW	139
RLB MS MAGGY 436B P	KEYS CHARLES BRONSON 189X			MILK	26.2
	RLB MISS MAGNUM 216Z			MCE	10.3
LT LEDGER 0332 P	LT BLUEGRASS 4017 P			MTL	65
RLB MISS SYBIL 742E	LT BRENDA 6120 PLD			SC	1.1
RLB MS SYBIL 118Y PLD	SCR SIR GRID MAKER 603Z			TSI	282.64
	RLB MS SYBIL 651S			CW	36
Another high indexing Fargo x Ledger combination. Great TSI and sound genetics you can depend on.				REA	0.98
				FAT	0.047
				MARB	0.16

R LAZY B RANCH **806M RLB BLUE BOY 806M** Polled
Reg#: M1002602

BD: 4/19/24	BW: 90	AWW: 702	Ratio: 100	CE	12.8
YW: _____	ADG: _____			BW	-1.0
LT BLUE VALUE 7903 ET	LT BLUEGRASS 4017 P			WW	62
LT JUNCTION 1264 PD	LT UNLIMITED MAID 7184 P			YW	104
LT BRENDA 5456 ET PLD	LT LONG DISTANCE 9001 PLD			MILK	28.7
	LT BRENDA 1014 PLD			MCE	7.8
LT LANDMARK 5052 PLD	LT RUSHMORE 8060 PLD			MTL	60
RLB MS BLUE MARK 806F	LT JENNY 3028 PLD			SC	1.0
RLB MISS BLUE WEST 609D	LT BLUE RAY 3316 TW PLD			TSI	265.25
	RLB MS WEST WIND 422B P			CW	23
Moderate framed and extra thick. Work on any type of cow.				REA	0.73
				FAT	0.026
				MARB	0.18

R LAZY B RANCH **812M RLB MR ALLY CAT 812M** Polled
Reg#: M1002608

BD: 4/10/24	BW: 86	AWW: 727	Ratio: 99	CE	10.9
YW: _____	ADG: _____			BW	-0.8
LT BLUE VALUE 7903 ET	LT BLUEGRASS 4017 P			WW	65
LT JUNCTION 1264 PD	LT UNLIMITED MAID 7184 P			YW	128
LT BRENDA 5456 ET PLD	LT LONG DISTANCE 9001 PLD			MILK	23.2
	LT BRENDA 1014 PLD			MCE	9.1
RBM FARGO Y111	SPARROWS FARGO 811U			MTL	56
RLB MS ALLY 812F	HC RHINESTONE 5100			SC	1.4
RLB MISS ALLY 504C PLD TW	LT LEDGER 0332 P			TSI	270.76
	RLB MISS ABBY 359A			CW	32
Moderate framed and extra thick. Work on any type of cow.				REA	0.62
				FAT	0.043
				MARB	0.11

R LAZY B RANCH **813M RLB INTERCHANGE 813M** Polled
Reg#: M1002622

BD: 4/3/24	BW: 86	AWW: 743	Ratio: 101	CE	11.5
YW: _____	ADG: _____			BW	-1.0
LT BLUE VALUE 7903 ET	LT BLUEGRASS 4017 P			WW	63
LT JUNCTION 1264 PD	LT UNLIMITED MAID 7184 P			YW	114
LT BRENDA 5456 ET PLD	LT LONG DISTANCE 9001 PLD			MILK	26.1
	LT BRENDA 1014 PLD			MCE	10.7
RBM FARGO Y111	SPARROWS FARGO 811U			MTL	58
RLB MISS BLUE FARGO 813F	HC RHINESTONE 5100			SC	1.1
RLB MS BLUE 401B P	LT BLUE VALUE 7903 ET			TSI	267.22
	RLB MISS DISTANCE282Z			CW	28
Ditto from the last bull and closely bred. Consistency in a load of feeder cattle will generate a higher price at the sale barn.				REA	0.61
				FAT	0.034
				MARB	0.14

R LAZY B RANCH **815M RLB LAUNCH PAD 815M** Polled
Reg#: M1002632

BD: 3/30/24	BW: 92	AWW: 704	Ratio: 96	CE	6.1
YW: _____	ADG: _____			BW	0.5
SHSH HIGH CLASS 43D	WINN MANS LANZA 610S			WW	69
HTA MISSLE 110H	SHSH MADONNA 21U			YW	132
HTA BRIDGET 704T	M6 GRID MAKER 104 PET			MILK	28
	HTA BRIDGET 577R			MCE	3.4
RBM FARGO Y111	SPARROWS FARGO 811U			MTL	62
RLB MISS FARGO 815F	HC RHINESTONE 5100			SC	1.4
RLB MISS 420B P	EC ABOUT TIME 5027 PLD			TSI	274.14
	RLB MS BLAZE 501			CW	34
You'll like the stretch and length this bull will add to your feeder calves.				REA	0.81
				FAT	-0.004
				MARB	-0.03





R LAZY B RANCH
823M RLB RANGER 823M Polled
 Reg#: M1002994

BD: 4/6/24 BW: 86 AWW: 734 Ratio: 100
 YW: _____ ADG: _____

CE	12.7
BW	-2.3
WW	72
YW	135
MILK	23.4
MCE	9.4
MTL	60
SC	1.7
TSI	277.76
CW	34
REA	0.90
FAT	0.037
MARB	0.05

PLEASANT DAWN MVP 316Y PLEASANT DAWN MAGNUM 56T
 TURNBULL'S KNOCKIN BOOTS 604K PLEASANT DAWN RIO 216P
 CTP MISS ASHLEY 604C LT LEDGER 0332 P
 WHITECAP LADY EVE 102A

RBM FARGO Y111 SPARROWS FARGO 811U
 RLB MISS FARGO 823F HC RHINESTONE 5100
 RLB MS MASTERS 310A LT LEDGER 0332 P
 RLB MS MASTER 132Y TW

A Boots bull with added length and gainability in the feedlot.

R LAZY B RANCH
824M RLB SIR FLAME 824M Polled
 Reg#: M1002599

BD: 5/1/24 BW: 90 AWW: 678 Ratio: 97
 YW: _____ ADG: _____

CE	13.6
BW	-3.6
WW	70
YW	126
MILK	22.2
MCE	12.5
MTL	57
SC	1.0
TSI	279.70
CW	34
REA	0.87
FAT	0.054
MARB	0.13

RBM FARGO Y111 SPARROWS FARGO 811U
 RLB FARGO FLAME 436E HC RHINESTONE 5100
 RLB MS MAGGY 436B P KEYS CHARLES BRONSON 189X
 RLB MISS MAGNUM 216Z

LT PATRIOT 4004 PLD LT LEDGER 0332 P
 RLB MS PATRIOT 824F LK MISS RIO 2119
 RLB MS WRANGLER 513C PLD WR WRANGLER W601
 RLB MISS SWEETY 311A

Here's another bull with a May birthdate, but he's too good to not be in the catalog. He will have the size and maturity to be useful in the breeding pasture come turnout.

R LAZY B RANCH
830M RLB ROADGRADER 830M Polled
 Reg#: M1002617

BD: 4/4/24 BW: 86 AWW: 677 Ratio: 92
 YW: _____ ADG: _____

CE	10.6
BW	-1.3
WW	58
YW	106
MILK	27.6
MCE	8.9
MTL	57
SC	1.1
TSI	270.89
CW	29
REA	0.56
FAT	0.031
MARB	0.21

LT BLUE VALUE 7903 ET LT BLUEGRASS 4017 P
 LT JUNCTION 1264 PD LT UNLIMITED MAID 7184 P
 LT BRENDA 5456 ET PLD LT LONG DISTANCE 9001 PLD
 LT BRENDA 1014 PLD

LT PATRIOT 4004 PLD LT LEDGER 0332 P
 RLB MISS PATINA 830F LK MISS RIO 2119
 RLB MISS TINA 121Y PLD SCR SIR GRID MAKER 6032
 RLB MS TINA 746T

I appreciate these Junction cattle for their capacity and look of a beef maker.

R LAZY B RANCH
836M RLB MAX FORCE 836M Polled
 Reg#: M1002621

BD: 4/3/24 BW: 90 AWW: 796 Ratio: 109
 YW: _____ ADG: _____

CE	13.9
BW	-1.0
WW	70
YW	125
MILK	28.2
MCE	13.6
MTL	63
SC	0.8
TSI	265.87
CW	24
REA	0.79
FAT	0.031
MARB	0.16

OW MAXIMIZER 3041 PLD DC-OW MAXIMIZER 385PLD
 KEYS MAXIMIZER 37J OW MISS SANDCREEK Y46
 MISS KEY GORGEOUS 2G CARDINALS LAD 6183P
 MISS KEY GORGEOUS 25E

LT PATRIOT 4004 PLD LT LEDGER 0332 P
 RLB MS PATTY 836F LK MISS RIO 2119
 RLB MS MAKER 922 SCR SIR GRID MAKER 6032
 RLBMSCONVERSE004KPLD

The Patriot cows have been steady producers for us, no matter what sire we've used. This Max son performed well and is pleasing to look at.

R LAZY B RANCH
882M RLB MR BOOTS 882M Polled
 Reg#: M1002990

BD: 4/17/24 BW: 84 AWW: 756 Ratio: 108
 YW: _____ ADG: _____

CE	12.6
BW	-2.2
WW	74
YW	135
MILK	22.8
MCE	9.0
MTL	60
SC	1.4
TSI	278.12
CW	33
REA	0.84
FAT	0.036
MARB	0.14

PLEASANT DAWN MVP 316Y PLEASANT DAWN MAGNUM 56T
 TURNBULL'S KNOCKIN BOOTS 604K PLEASANT DAWN RIO 216P
 CTP MISS ASHLEY 604C LT LEDGER 0332 P
 WHITECAP LADY EVE 102A

LT COMMISSIONER 5232 PLD LT LEDGER 0332 P
 RLB MISS SNOWFLAKE 882F LT BALLET 9219 POLLED
 RLB MISS SNOWY 449B P RBM FARGO Y111
 RLB MS SNOWY 626S TW

A Boots that is young, but good. Again a pedigree based on sound, proven genetics.



R LAZY B RANCH
911M RLB EMERGENCY 911M Polled
 Reg#: M1002616

BD: 4/5/24 BW: 94 AWW: 777 Ratio: 108
 YW: _____ ADG: _____

CE	8.9
BW	0.2
WW	74
YW	137
MILK	22.9
MCE	10.7
MTL	60
SC	1.2
TSI	273.84
CW	34
REA	0.90
FAT	0.002
MARB	-0.09

KEYS BALLYHOO 77D KEYS PROGRESSIVE 170Z
 KEYS BALLYHOO 239J MISS KEY GORGEOUS 90Z
 MISS KEY GIRL 160Y MISS KEY GIRL 36P

RBM FARGO Y111 SPARROWS FARGO 811U
 RLB MISS EMERGENCY 911G HC RHINESTONE 5100
 RLB MS SYBIL 668D EC MAJOR IMPACT 107 PLD
 RLB MS SYBIL 477B P

Ballyhoo made this bull heavy boned and big barreled which contributes to his feeding ability.



R LAZY B RANCH
913M RLB ROYALE 913M Polled
 Reg#: M1002806

BD: 4/30/24	BW: 84	AWW: 801	Ratio: 111	CE	11.6
YW: _____	ADG: _____			BW	-2.0
				VW	79
				YW	144
				MILK	28.6
				MCE	9.0
				MTL	68
				SC	1.5
				TSI	280.26
				CW	36
				REA	0.94
				FAT	0.034
				MARB	0.05

PLEASANT DAWN MVP 316Y
 TURNBULL'S KNOCKIN BOOTS 604K
 CTP MISS ASHLEY 604C

PLEASANT DAWN MAGNUM 56T
 PLEASANT DAWN RIO 216P
 LT LEDGER 0332 P
 WHITECAP LADY EVE 102A

RBM FARGO Y111
 RLB MS ROYALE 913G
 RLB MISS ROYALE 615D

SPARROWS FARGO 811U
 HC RHINESTONE 5100
 LT PATRIOT 4004 PLD
 RLB ISS ROYALE 302A

This young bull is kinda built on a moderate frame, but his performance numbers are honest. His look and muscle shape will only be more impressive as he matures. Don't pass him by because of his age.

R LAZY B RANCH
919M RLB JUNCTION 919M Polled
 Reg#: M1002637

BD: 3/24/24	BW: 86	AWW: 733	Ratio: 105	CE	10.7
YW: _____	ADG: _____			BW	-0.5
				VW	65
				YW	115
				MILK	26.7
				MCE	9.8
				MTL	59
				SC	1.2
				TSI	274.62
				CW	32
				REA	0.72
				FAT	0.030
				MARB	0.12

LT BLUE VALUE 7903 ET
 LT JUNCTION 1264 PD
 LT BRENDA 5456 ET PLD

LT BLUEGRASS 4017 P
 LT UNLIMITED MAID 7184 P
 LT LONG DISTANCE 9001 PLD
 LT BRENDA 1014 PLD

RBM FARGO Y111
 RLB FARWIND 919G
 RLB MISS WIND 672D

SPARROWS FARGO 811U
 HC RHINESTONE 5100
 EC WESTERN WAY 6335 PLD
 RLB MISS KEY WIND 906

A Junction with a lot of growth to him. His dam the 919 cow is a full sibling to a past high selling bull.

M-L

RANCH

CUSTOM CHOPPING & HAY SALES

MILNOR, ND | 701.427.9229



R LAZY B RANCH
921M RLB BIG COUNTRY 921M Polled
 Reg#: M1002648

BD: 3/17/24	BW: 90	AWW: 722	Ratio: 103	CE	8.9
YW: _____	ADG: _____			BW	0.3
				VW	70
				YW	129
				MILK	18.5
				MCE	10.8
				MTL	54
				SC	1.2
				TSI	267.72
				CW	31
				REA	0.81
				FAT	0.004
				MARB	-0.05

KEYS BALLYHOO 77D
 KEYS BALLYHOO 239J
 MISS KEY GIRL 160Y

KEYS PROGRESSIVE 170Z
 MISS KEY GORGEOUS 90Z
 KEYS TEN-ACIOUS 166S
 MISS KEY GIRL 36P

RBM FARGO Y111
 RLB COW PATTI 921G
 RLB MISS PATTI 626D

SPARROWS FARGO 811U
 HC RHINESTONE 5100
 LT PATRIOT 4004 PLD
 RLB MISS DISTANCE282Z

Thick and chunky, and also very correct. His Great-Grandam is still in the herd.

R LAZY B RANCH
924M RLB ROADMAP 924M Polled
 Reg#: M1002613

BD: 4/6/24	BW: 90	AWW: 717	Ratio: 102	CE	8.5
YW: _____	ADG: _____			BW	-0.4
				VW	67
				YW	120
				MILK	25
				MCE	9.2
				MTL	59
				SC	1.3
				TSI	265.58
				CW	30
				REA	0.57
				FAT	0.039
				MARB	0.15

LT BLUE VALUE 7903 ET
 LT JUNCTION 1264 PD
 LT BRENDA 5456 ET PLD

LT BLUEGRASS 4017 P
 LT UNLIMITED MAID 7184 P
 LT LONG DISTANCE 9001 PLD
 LT BRENDA 1014 PLD

LT PATRIOT 4004 PLD
 RLB MS MASTER PAT 924G
 RLB MS MASTERS 643D

LT LEDGER 0332 P
 LK MISS RIO 2119
 EC MAJOR IMPACT 107 PLD
 RLB MISS MASTER 450B P

This bull is a fine choice. The Patriot daughters really turned it up this year about putting bulls in the sale catalog.

R LAZY B RANCH
932M RLB FAST TRACK 932M Polled
 Reg#: M1002645

BD: 3/18/24	BW: 92	AWW: 753	Ratio: 105	CE	7.9
YW: _____	ADG: _____			BW	0.2
				VW	67
				YW	120
				MILK	25.2
				MCE	7.8
				MTL	59
				SC	1.2
				TSI	268.79
				CW	32
				REA	0.63
				FAT	0.039
				MARB	0.16

LT BLUE VALUE 7903 ET
 LT JUNCTION 1264 PD
 LT BRENDA 5456 ET PLD

LT BLUEGRASS 4017 P
 LT UNLIMITED MAID 7184 P
 LT LONG DISTANCE 9001 PLD
 LT BRENDA 1014 PLD

LT PATRIOT 4004 PLD
 RLB MISS PAT 932G
 RLB MISS PRISS 654D

LT LEDGER 0332 P
 LK MISS RIO 2119
 RBM FARGO Y111
 RLB MISS PRISSY 133Y PLD

He will put you on the Fast Track to the bank when you take your calf check to town. Check out his clean look and well built attributes.

R LAZY B RANCH

934M RLB ROCKET SHIP 934M

Polled

Reg#: M1002612

BD: 4/7/24 BW: 98 AWW: 744 Ratio: 102
 YW: _____ ADG: _____

HTA MISSILE 110H
 HTA BRIDGET 704T
 SHSH HIGH CLASS 43D
 SHSH MADONNA 21U
 M6 GRID MAKER 104 PET
 HTA BRIDGET 577R
 LT PATRIOT 4004 PLD
 RLB MISS SNOWY 934G
 RLB SNOW WHITE 570C PLD
 LT LEDGER 0332 P
 LK MISS RIO 2119
 RBM NO DOUBT Z34
 RLB MS SNOWY 626S TW

Missile progeny with size and length again from a top producing Patriot.

CE	3.7
BW	1.2
VW	70
YW	130
MILK	31.5
MCE	1.9
MTL	66
SC	1.3
TSI	265.86
CW	30
REA	0.69
FAT	0.005
MARB	0.10



R LAZY B RANCH

947M RLB WALKER 947M

Polled

Reg#: M1002999

BD: 3/17/24 BW: 90 AWW: 788 Ratio: 108
 YW: _____ ADG: _____

TURNBULL'S KNOCKIN BOOTS 604K
 CTP MISS ASHLEY 604C
 PLEASANT DAWN MVP 316Y
 PLEASANT DAWN MAGNUM 56T
 PLEASANT DAWN RIO 216P
 LT LEDGER 0332 P
 WHITECAP LADY EVE 102A
 HTA CENTERFIRE 618D
 RLB MISS SWEETIE 947G
 RLB MS SWEETIE 464B P
 LT LEDGER 0332 P
 HTA HOT STUFF (S) 693S
 RBM FARGO Y111
 RLB SWEETIE 616S

The Boots cattle have a lot going on in every facet of beef production.

CE	12.2
BW	-1.9
VW	69
YW	136
MILK	25.7
MCE	9.9
MTL	60
SC	1.5
TSI	270.02
CW	29
REA	0.84
FAT	0.038
MARB	0.10



R LAZY B RANCH

963M RLB FARGOAN 963M

Polled

Reg#: M1002625

BD: 4/1/24 BW: 84 AWW: 704 Ratio: 96
 YW: _____ ADG: _____

RLB FARGO FLAME 436E
 RLB MS MAGGY 436B P
 RBM FARGO Y111
 SPARROWS FARGO 811U
 HC RHINESTONE 5100
 KEYS CHARLES BRONSON 189X
 RLB MISS MAGNUM 216Z
 LT COMMISSIONER 5232 PLD
 RLB MS SHEBA 963G
 RLB MS SHEBA 472B P
 LT LEDGER 0332 P
 LT BALLETT 9219 POLLED
 EC ABOUT TIME 5027 PLD
 RLB MS SHEBA 627S

Flame son that shows impressive depth to the rear quarter yet has a clean, refined front. High TSI and growth EPDs.

CE	11.6
BW	-2.0
VW	73
YW	140
MILK	20.9
MCE	9.9
MTL	57
SC	1.1
TSI	284.65
CW	38
REA	0.85
FAT	0.052
MARB	0.15



R LAZY B RANCH

976M RLB PENDLETON 976M

Polled

Reg#: M1002996

BD: 3/24/24 BW: 92 AWW: 795 Ratio: 108
 YW: _____ ADG: _____

RLB MS COMMISH 976G
 RLB MISS 489B
 PLEASANT DAWN MVP 316Y
 PLEASANT DAWN MAGNUM 56T
 PLEASANT DAWN RIO 216P
 LT LEDGER 0332 P
 WHITECAP LADY EVE 102A
 LT COMMISSIONER 5232 PLD
 RLB MS COMMISH 976G
 RLB MISS 489B
 LT LEDGER 0332 P
 LT BALLETT 9219 POLLED
 RBM FARGO Y111
 RLB MISS ULTRA 826U

Could be the best of the Boots offspring. Really like his Mother. Big attractive cow with a perfect udder. House cat gentle. PA pending.

CE	10.5
BW	-1.3
VW	77
YW	134
MILK	21.3
MCE	7.4
MTL	60
SC	1.4
TSI	269.21
CW	30
REA	0.84
FAT	0.039
MARB	0.12





PROFIT STARTS

HERE

Charolais bulls achieve Yield Grade premiums while continuing to deliver on quality:

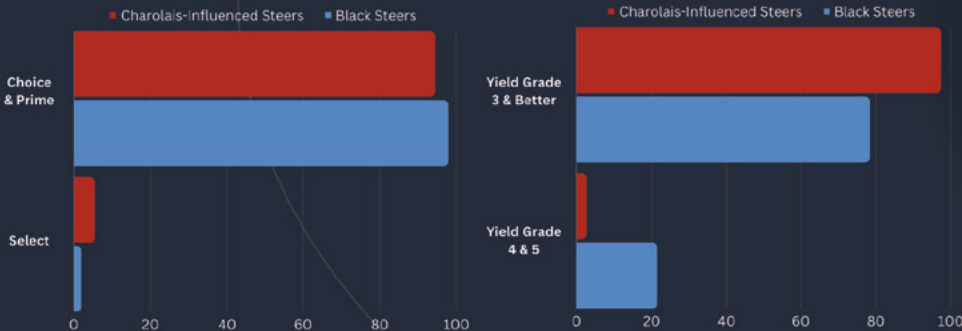
- Packer preferred for increasing red meat yield and carcass weight without sacrificing quality grade.
- Delivering the ability to reduce days on feed with efficient feedyard performance and feed conversion.
- Providing the ability to outperform at weaning for more dollars per head, no matter the market.



CHAROLAIS-INFLUENCED FED CATTLE COMPARISON 2100 STEERS HARVESTED 12/28/18 - 4/10/23

QUALITY GRADE

YIELD GRADE

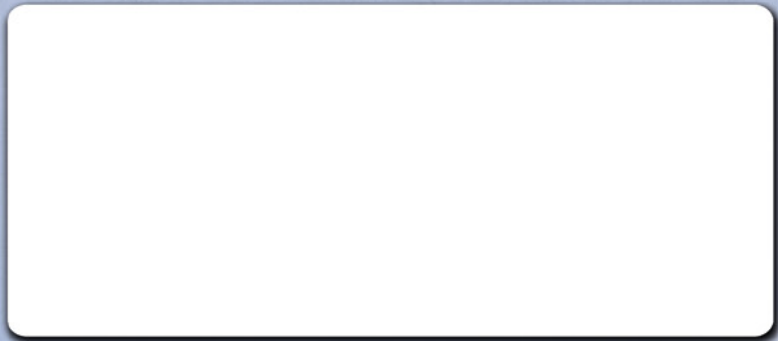


* 1,113 black hided steers and 987 Charolais-Influenced steers were harvested from December 28, 2018 thru April 10, 2023, at the Cargill plant in Ft. Morgan, CO. Cattle originated from Nebraska and were sired by registered Angus & Charolais bulls.

816.464.5977 • Fax: 816.464.5759
 info@charolaisusa.com
 www.CHAROLAISUSA.com
 www.POUNDSMATTER.com



Robert Birkliid
5851 122nd Ave SE
Nome, ND 58062
701-924-8876



ANNUAL PRODUCTION SALE
FRIDAY, FEBRUARY 21, 2025
1 PM CT || HUB CITY LIVESTOCK, ABERDEEN, SD

66 YEARLING
CHAROLAIS BULLS SELL
SATISFACTION GUARANTEED